



news local

realestate

Inner West Courier Inner City | Tuesday, December 12, 2017



HOUSE OF THE WEEK

DREAM LIVING

FEDERATION HOME
IN TOXTETH ESTATE
A RARE OFFERING
PAGE 44



STUNNING SEMI
RECEIVES CLASSY
MAKEOVER
PAGE 45





HOUSE OF THE WEEK



ERSKINEVILLE 110-112 GEORGE ST



Tidy Victorian cottage

AGENT SAYS

This property has so much upside. Not only does this charming, character-filled, double-fronted cottage sit in a convenient location, it is freestanding and on a large 220 sqm parcel of land with parking. It offers enough space for a young family to grow into and create their dream home.



DETAILS

Sale: Private treaty

Inspect: Wednesday, 5.30-6pm, Saturday, 10.30-11am

Price guide: \$1.565m

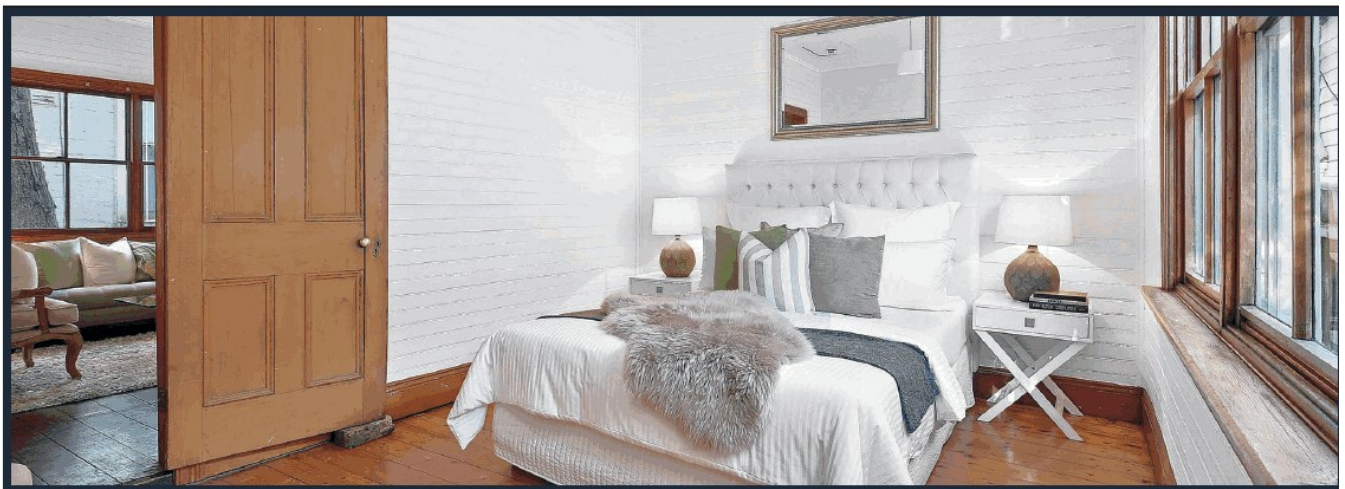
Agent: Raine and Horne – Newtown

Contact: Duncan Gordon, 0414 349 669, Dean Farrajota, 0404 302 428

Floorplan: Produced by Diakrit. It showcases the layout of the house.



Produced by DIAKRIT



GEORGIA BROWN

There are few things more iconic in this part of Sydney than a weatherboard workers' cottage. Bundarra, the double-fronted cottage at 110-112 George St, Erskineville, is as picturesque on the inside as its quaint facade. Built circa 1890, with many of its original features still intact, it truly is a piece of history.

Framed by a white picket fence, the bright red front door stands out against the white weatherboards and cool grey accents. The front door opens into the main entry hall, which extends past the bedrooms and through to the living space. Each of the bedrooms are positioned at the front of the house. All three have timber framed windows.

One of the bedrooms has a beautiful brick fireplace with a timber mantle, while another has a wall-to-wall built-in wardrobe with sliding doors.

There's something about this

house that really makes it feel homely. And it is in the living and dining rooms that you feel it the most. The way the solid timber floorboards contrast against the white, wood-panelled ceilings and floors is cosy and comforting, while the light from the large windows keeps it bright and fresh.

When you enter the dining room, your eyes are immediately drawn to the exposed brick fireplace. It really makes the room something special. It's the perfect place to host an intimate dinner party.

The kitchen sits at the back of the house, offering gas cooking and a breakfast bar for casual dining. A huge window above the sink looks out to the tree-lined backyard. There is an internal laundry that connects to the main bathroom. The bathroom has a combined bathtub and shower, and a separate toilet.

The courtyard is low-maintenance and has plenty of potential. There is also a car space at the front. The cottage is close to parks, schools and the train station.

